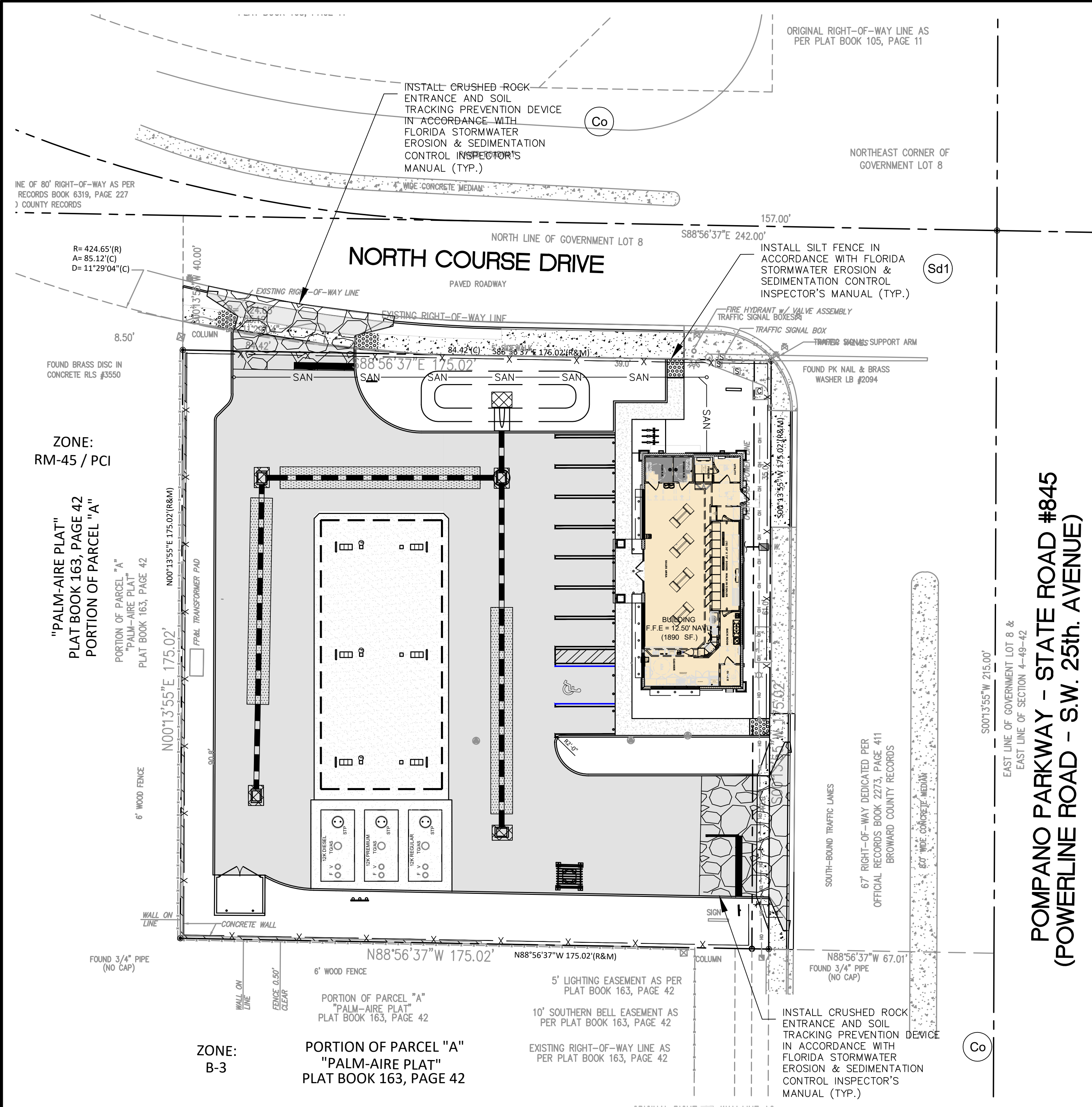
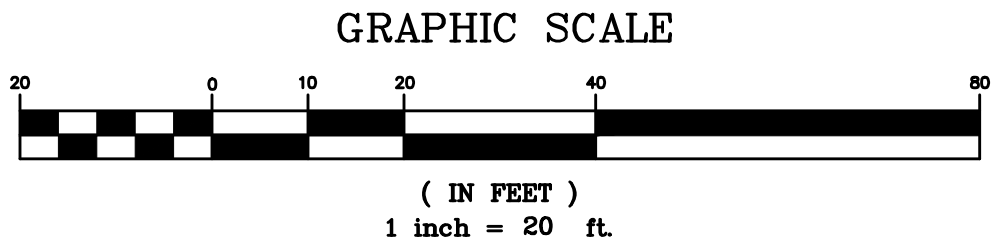


Y:\Shared\Documents\001 - Engineering\Sunshine Gasoline Distributors\01119 - 250 9010 Cdw 301 Pompano Hwy re-engineered Nov 202402 - Dwg File\0309 - Cdw\0309 21119 Dwg.dwg, 9/15/2025 1:39:38 PM



EROSION CONTROL PLAN

SCALE: 1" = 20'-0"



LEGEND:

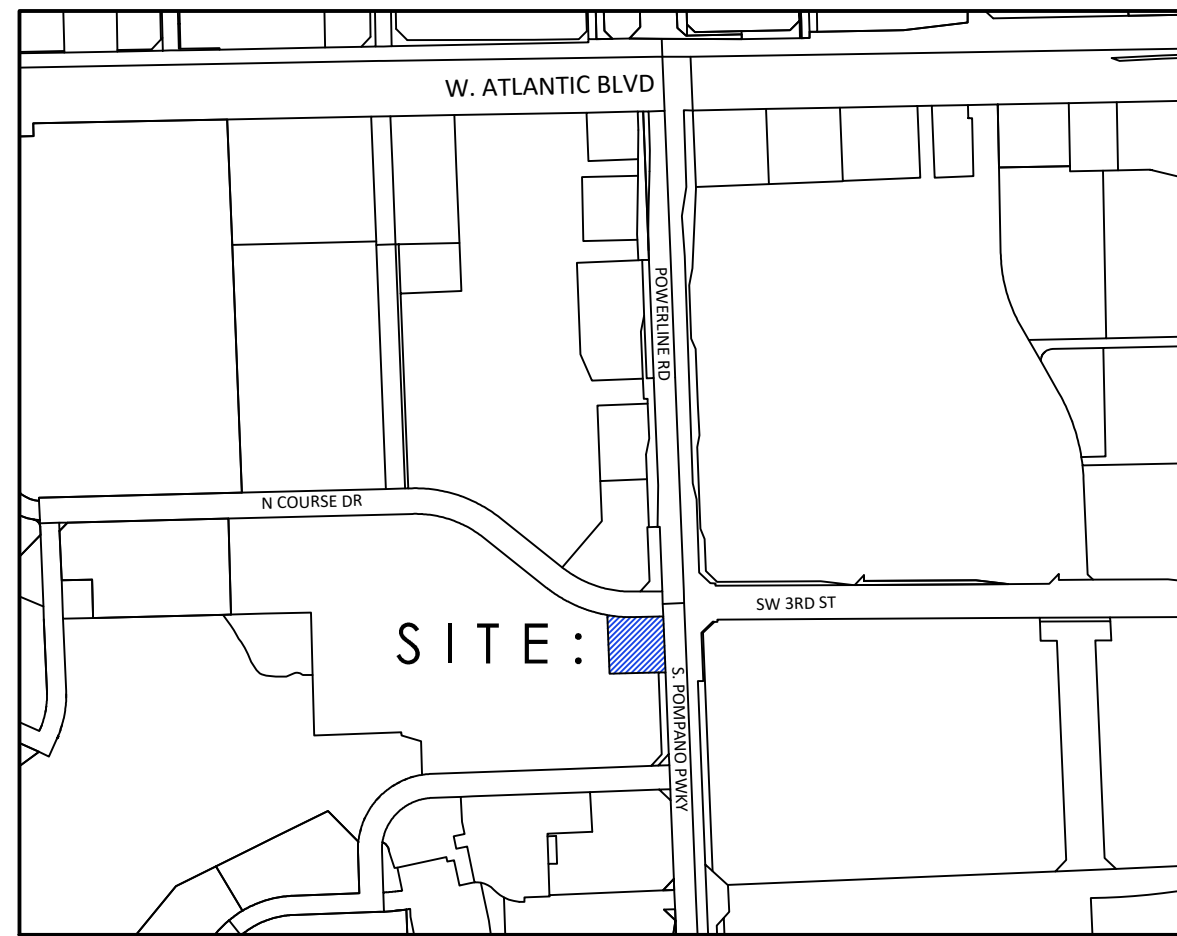
- CATCH BASIN EROSION PROTECTION
- SOIL TRACKING PREVENTION
- SILT FENCE INSTALLATION



Know what's below.
Call before you dig.

Copyright © MDM SERVICES, INC.

All rights reserved. No part of this plan may be reproduced, distributed, or transmitted in any form or by any means, including photocopying, recording, electronic or mechanical methods, without the prior written permission of MDM Services, Inc. For permission requests, write MDM Services, Inc., 1055 Kathleen Road, Lakeland, FL 33809.



EROSION CONTROL NOTES:

THE ESCAPE OF SEDIMENT FROM THE SITE SHALL BE PREVENTED BY THE INSTALLATION OF EROSION AND SEDIMENT CONTROL MEASURES AND PRACTICES PRIOR TO, OR CONCURRENT WITH, LAND DISTURBING ACTIVITIES.

SITE EROSION CONTROLS SHALL BE CHECKED AND IF NECESSARY, REPAIRED WEEKLY AND WITHIN 24 HOURS AFTER EACH RAINFALL $\geq 1/2"$. IN THE EVENT OF CONTINUOUS RAINFALL, EROSION CONTROLS SHALL BE CHECKED DAILY.

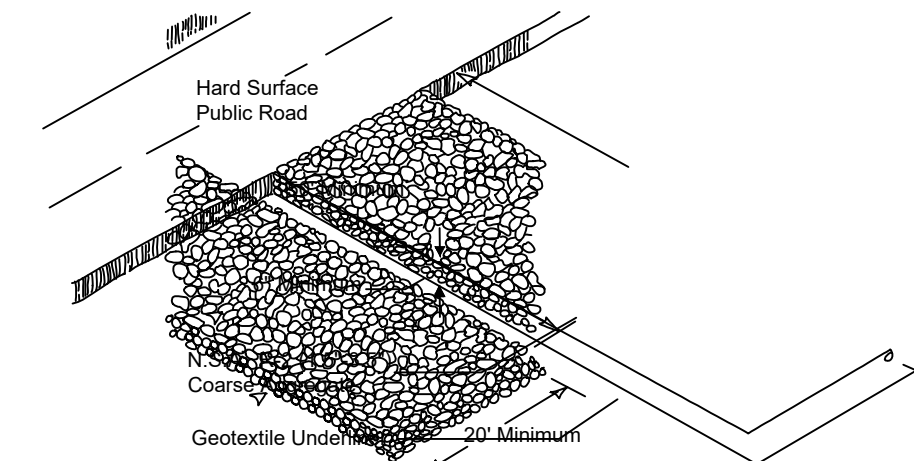
EROSION AND SEDIMENTATION CONTROL MEASURES WILL BE MAINTAINED AT ALL TIMES. ADDITIONAL EROSION AND SEDIMENTATION CONTROL MEASURES AND PRACTICES WILL BE INSTALLED AS DEEMED NECESSARY BY ONSITE INSPECTION.

ALL EROSION CONTROL MEASURES ARE TO CONFORM TO THE STANDARDS SET FORTH IN THE USDA "PLANNING AND DESIGN MANUAL FOR EROSION AND SEDIMENT CONTROL", AND THE FLORIDA DEPARTMENT OF ENVIRONMENTAL PROTECTION (FDEP) "STORMWATER BMP MANUAL FOR BEST MANAGEMENT PRACTICES", CURRENT EDITIONS.

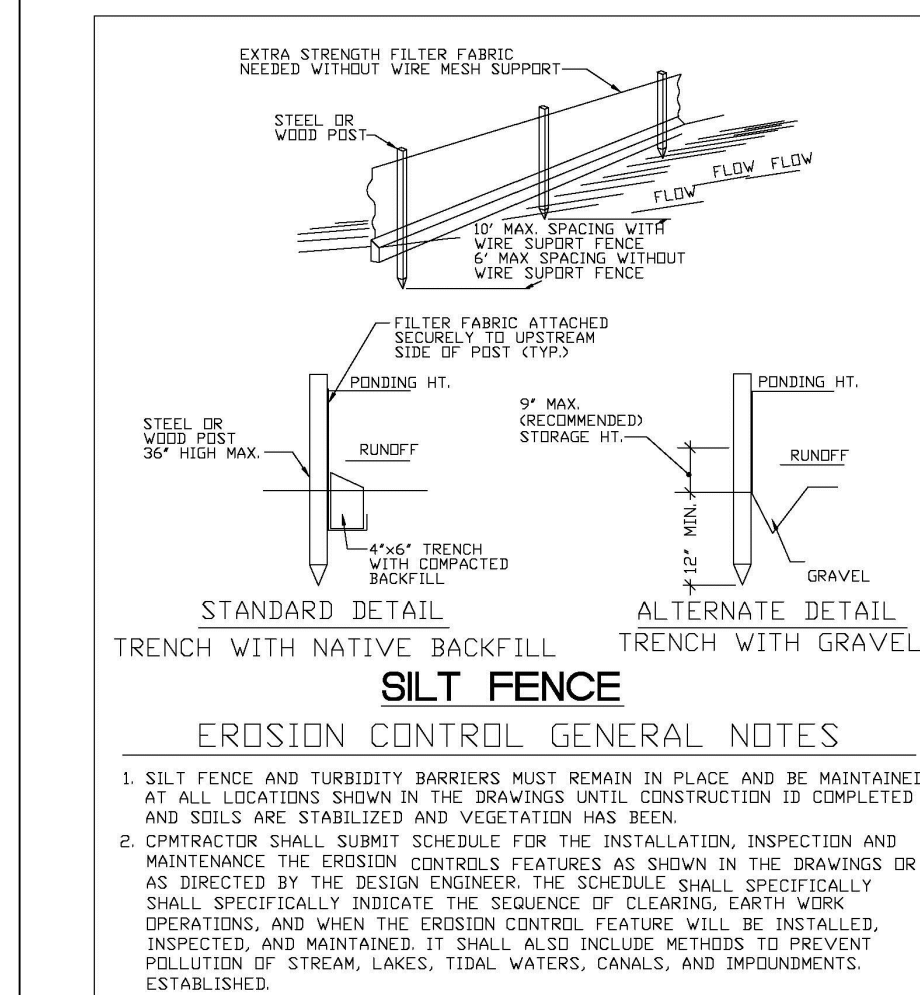
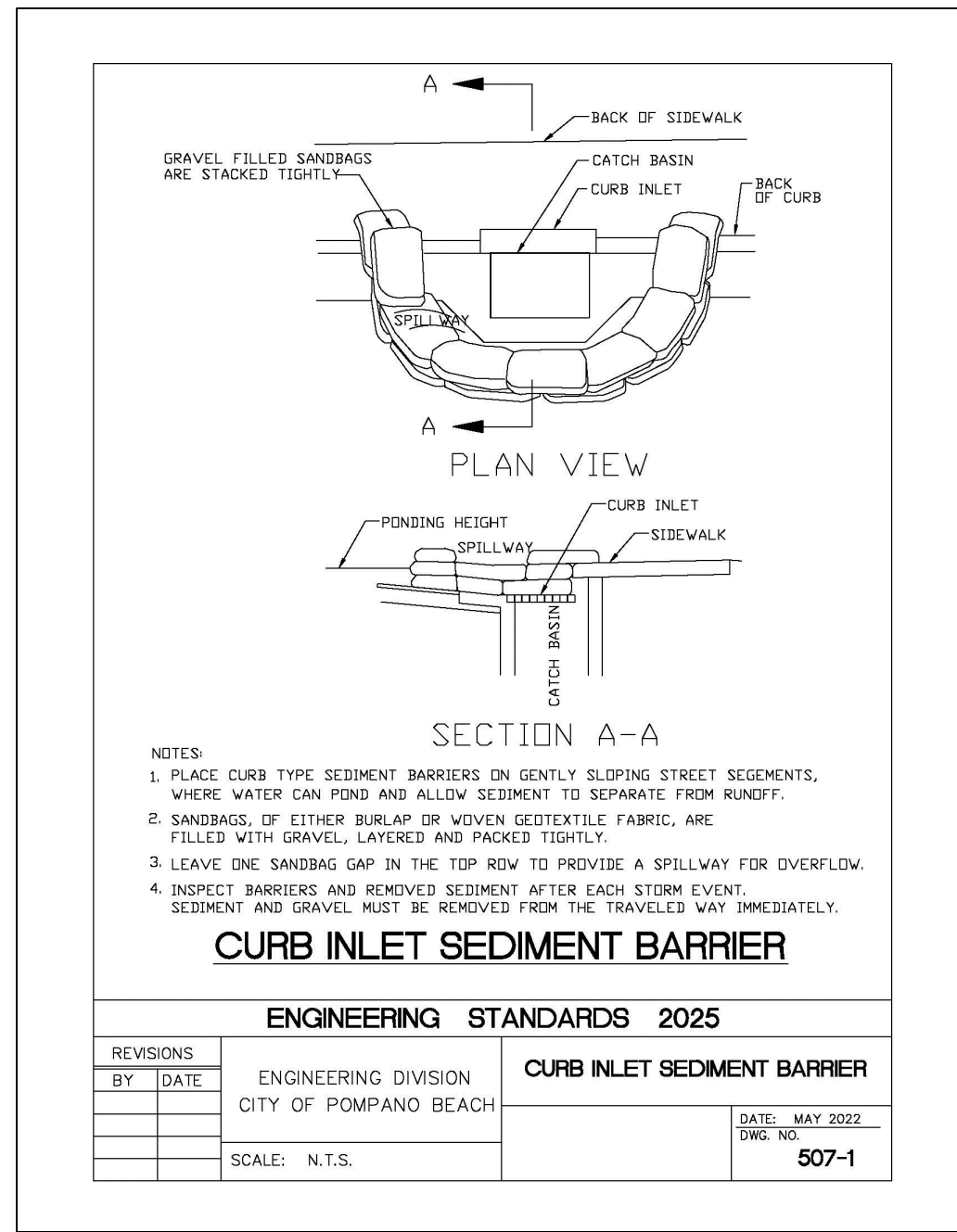
ALL AREAS TO REMAIN BARE > 15 DAYS MUST BE TEMPORARILY STABILIZED.

WASTE MATERIALS SHALL NOT BE DISCHARGED TO WATERS OF THE STATE.

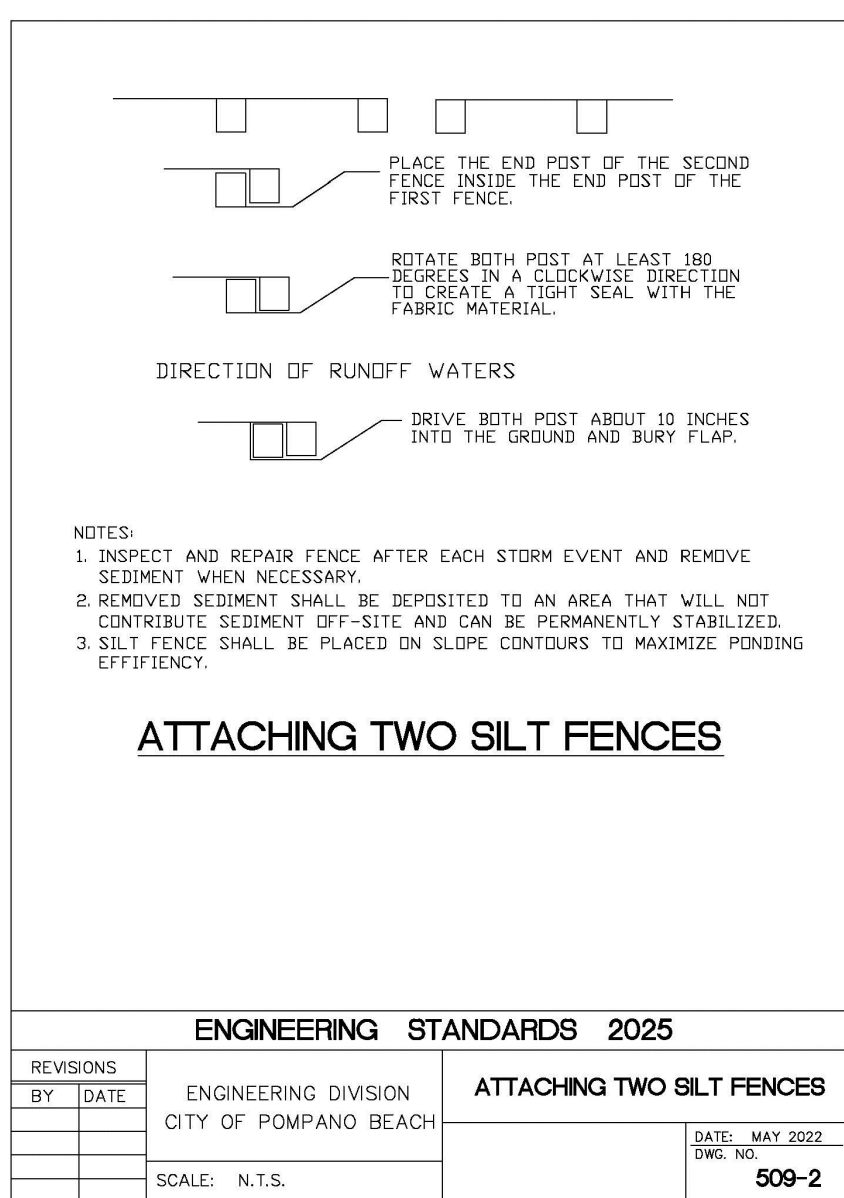
INSPECTIONS: CONTRACTOR SHALL INSPECT AND DOCUMENT EROSION AND SEDIMENT CONTROL MEASURES AND REPAIR AS NEEDED MIN. 2 TIMES PER WEEK AND AT LEAST 72 HOURS APART.



Co CRUSHED STONE CONSTRUCTION EXIT



Sd1 SILT FENCE DETAIL
NO SCALE



CLIENT:



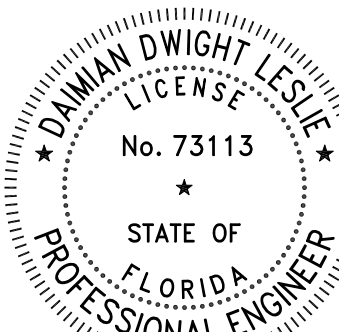
DESIGN TEAM TITLE:

MDM
SERVICES, INC.

engineering • environmental • construction

2151 W. HILLSBORO BLVD, DEERFIELD BEACH,
FLORIDA 33442
Phone: (954) 427-3076
FLORIDA CA #4857

NO. DATE REVISION DESCRIPTION



DAIMAN D. LESLIE
FL REG # 73113

PROJECT DESCRIPTION:

**NEW
C-STORE**

SITE DESIGNATION:

**SUNSHINE GASOLINE DISTRIBUTORS
CHEVRON
GAS STATION #010**

SITE ADDRESS:

**301 POMPAÑO PKWY,
POMPAÑO BEACH, FL
33069**

SCALE: AS NOTED MDM JOB # 21119

DATE: 08-11-2022

DESIGNED BY:

DRAWN BY: FILE NAME:

CHECKED BY: 21119 CD.DWG

DRAWING TITLE:

**EROSION CONTROL
PLAN**

SHEET NO.:

DRG EC-1.0

PZ25-12000017

07/02/2025